



# Mental Health in Crisis

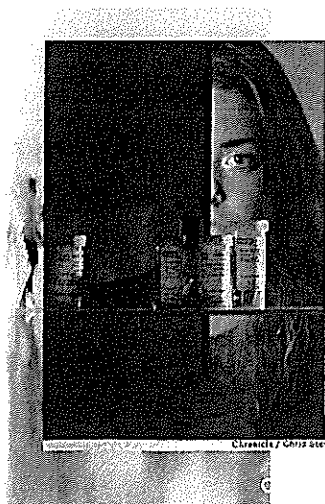
Australia & New Zealand Lecture Tour Feb 2018

Professor Peter Gøtzsche

Robert Whitaker

Don't miss the opportunity to hear the evidence from international and local experts on the causes and solutions for the current mental health crisis

Register Now



## Over Prescribing

The evidence is..

The drugs prescribed to help us are a leading cause of death.



# Mental Health in Crisis

## Australia

Saturday 24 Feb

Sydney

Portside Centre  
207 Kent Street  
8.50am - 5.00pm

[Register](#)

## New Zealand

Monday 26 Feb

Christchurch  
Riccarton Park  
165 Racecourse Road  
Sockburn  
8.50am - 5.00pm

[Register](#)

Tuesday 27 Feb

Wellington  
Mac's Function Centre  
Taranaki Street Wharf  
Corner Cable & Taranaki Streets  
4.55pm - 9.00pm

[Register](#)

Wednesday 28 Feb

Hamilton  
Claudelands Event Centre  
Corner of Brooklyn Road  
and Heaphy Terrace  
Claudelands  
12.55pm - 5.30pm

[Register](#)

Friday 2 Mar

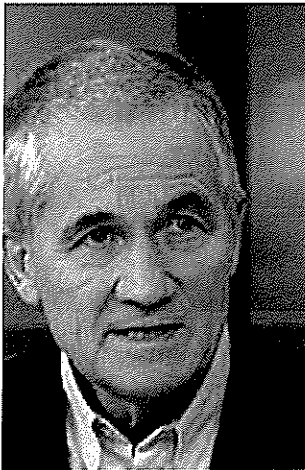
N ovotel Auckland Airport  
Ray Emery Dr, Auckland Airport, Auckland 2022  
8.50am - 5.00pm

[Register](#)



# Mental Health in Crisis

## Australia & New Zealand



### Professor Peter Gøtzsche

Professor Peter C Gøtzsche graduated as a Master of Science in biology and chemistry in 1974 and as a physician 1984. He is a specialist in internal medicine; worked with clinical trials and regulatory affairs in the drug industry 1975-1983, and at hospitals in Copenhagen 1984-95. With about 80 others, he helped start The Cochrane Collaboration in 1993 and established The Nordic Cochrane Centre the same year. He became a professor of Clinical Research Design and Analysis in 2010 at the University of Copenhagen. In 2017, he was elected to the Cochrane Governing Board, the Cochrane Collaboration's uppermost authority.

Peter has published more than 70 papers in "the big five" (BMJ, Lancet, JAMA, Ann Intern Med and N Engl J Med) and his scientific works have been cited 30,000 times. Peter is author of:

- Deadly psychiatry and organised denial
- Deadly medicines and organised crime: How big pharma has corrupted health care (2013)
- Mammography screening: truth, lies and controversy (2012)
- Rational diagnosis and treatment: evidence-based clinical decision-making (2007)

Peter's website, with resources for psychiatric drug withdrawal, is [www.deadlymedicines.dk](http://www.deadlymedicines.dk)



### Robert Whitaker

Robert Whitaker is a science journalist and the author of three books related to the history of psychiatry and its treatments, including *Mad in America: Bad Science, Bad Medicine, and the Enduring Treatment of the Mentally Ill*, and *Anatomy of an Epidemic: Magic Bullets, Psychiatric Drugs, and The Astonishing Rise of Mental Illness in America*.

He has won numerous awards as a journalist, including the George Polk Award for Medical Writing and a National Association for Science Writers' Award for best magazine article. In 1998, he co-wrote a series on psychiatric research for the Boston Globe that was a finalist for the Pulitzer Prize for Public Service. *Anatomy of an Epidemic* won the 2010 Investigative Reporters and Editors book award for best investigative journalism. He is the founder of critical psychiatry website [Mad in America](http://Mad in America).

### Melissa Raven



Melissa Raven is a psychiatric epidemiologist and policy analyst. She has previously worked as a clinical psychologist and as a lecturer/researcher in public health and primary health care. Melissa is strongly critical of mainstream mental health research, policy, and practice, particularly in relation to misuse of psychiatric epidemiological and economic evidence, neglect of social determinants of mental health, inappropriate psychiatric diagnosis, inappropriate prescribing of psychotropic drugs, and promotional strategies used by pharmaceutical companies, key opinion leaders, opportunistic policy makers, and other players with vested interests. She believes that patients/consumers, the general public, the media, bureaucrats and politicians, GPs (who provide the majority of mental health treatment), and even psychiatrists are seriously misled about the need for treatment and the effectiveness and safety of different treatments.

'Like her PhD, ["Depression and antidepressants in Australia and beyond: A critical public health analysis"](#), most of her current work focuses on analysing and exposing the rampant misrepresentation of evidence about mental health/illness in academic and grey literature and the policy arena, and the mutually reinforcing relationships among misrepresentation, ideology, and vested interests.



TITLE

**Maria Bradshaw**

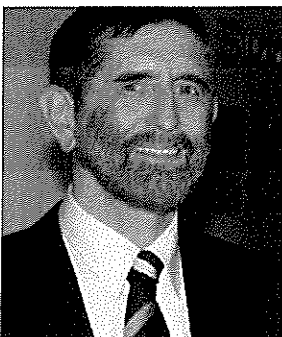
Maria Bradshaw lost her only child to SSRI induced suicide in 2008. Co-founder and CEO of CASPER (Community Action on Suicide Prevention Education & Research), Maria promotes a social model of suicide prevention focused on strengthening community cohesion, addressing the social drivers of suicide and providing communities with the knowledge and tools required to reclaim suicide prevention from mental health professionals. Maria has an MBA from Auckland University and particular interests in sociological and indigenous models of suicide prevention, prescription drug induced suicide, pharmacovigilance and alternatives to psychiatric interventions for emotional distress. Maria has researched and written a number of [papers](#) challenging the medical model of suicide prevention.



**David Carmichael**

David Carmichael took the life of his 11-year-old son Ian on July 31, 2004 in a London, Canada hotel room, three weeks after being on the antidepressant Paxil (Aropax). He was charged with first degree murder. In September 2005, he was judged to be not criminally responsible on account of a mental disorder which was diagnosed by forensic psychiatrists as major depression with psychotic episodes. David received an absolute discharge from Brockville Mental Health Centre in December 2009 and is currently the executive director of Canadians for Vanessa's Law, which recently launched [Know Your Drugs](#).

Australia Only



**Dr Niall McLaren**

Dr Niall McLaren is an Australian psychiatrist with extensive experience in delivering psychiatric services to remote areas, be they in Australia's most remote regions or in depressed urban areas. He has a particular interest in the application of the philosophy of science to psychiatry. This leads to the unhappy conclusion that modern psychiatry has no rational basis, that it is at best a protoscience which probably cannot be developed further.

Moniquea Spiteri

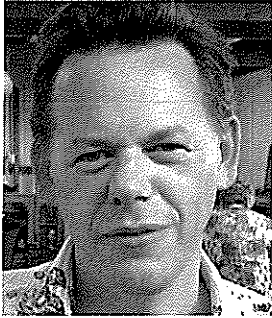


Moniquea is a somatic (body) psychotherapist who has worked in the field of mental health, personal development and trauma for over 15 years. She is also a passionate social entrepreneur and visionary change maker.

Having been involved with numerous holistic and innovative projects, Moniquea has a natural strength for creating new ways of doing things and helping others ignite their own inner spark to achieve their goals. Having had direct family experience with the frailties of the existing mental health system, she is unwavering in her commitment to the mental health sector

Moniquea is the Founder and President of Enveco Health– a social enterprise that will assist those living with mental health conditions regain wellness, retain employment and be supported in their personal recovery in a nurturing non clinical environment

## New Zealand Only



### Dr Bruce Cohen

Dr Bruce M. Z. Cohen is a Senior Lecturer in Sociology at the University of Auckland, New Zealand, and has researched mental health issues for over 25 years. With a particular focus on professional power and socio-economic disadvantage, his books include *Mental Health User Narratives: New Perspectives on Illness and Recovery*, *Psychiatric Hegemony: A Marxist Theory of Mental Illness*, and the *Routledge International Handbook of Critical Mental Health*.



### Roger Mulder

Professor Mulder's academic interests include personality disorders, mood disorders, genetics, neurobiology, suicide, substance abuse, psychiatric aspects of medical illness and history and cultural aspects of mental illness. He has published over 250 articles and book chapters. He is Editor of the *Personality and Mental Health*, Associate Editor of the *Australian and New Zealand Journal of Psychiatry* and the *New Zealand Medical Journal* and serves on several editorial boards. He is Co-chair of the WPA Section on Personality Disorders and a member of the ICD 11 Committee for Classification of Personality Disorders.

## Videos

### Peter Götzsche